

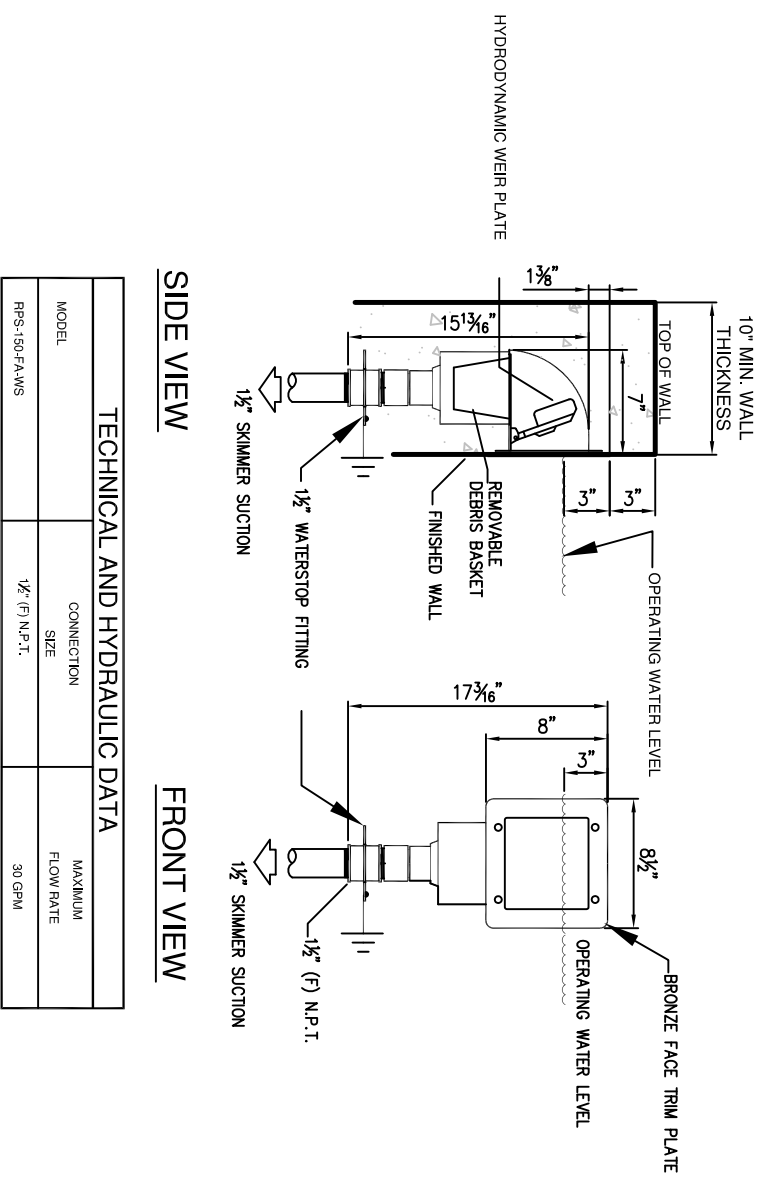
TECHNICAL DATA			
MODEL	CONNECTION SIZE	'A' DIMENSION	'B' DIMENSION
FI-15PFBN	1 1/2" (F)	5-1/2"	3-1/4"
			MAXIMUM FLOW RATE
			35 GPM

**SPECIFICATION DATA:** Machined cast bronze body and adjustable top plate, retaining screw, polished finish (on exposed portion), integral water stop with bonding screw and (F) N.P.T. connection. Fitting to be mounted flush with finished pool floor.

**DESIGN/APPLICATION DATA:** inlet fitting is designed for use in fountains and reflecting pools. Installed in the floor at the discharge point of the water makeup line, its flush mounted design with adjustable top plate creates a "finished" discharge point for incoming water.

### FLOOR INLET DETAIL

SCALE: NONE



TECHNICAL AND HYDRAULIC DATA		
MODEL	CONNECTION SIZE	MAXIMUM FLOW RATE
RPS-150-FAWS	1/2" (F) N.P.T.	30 GPM

**SPECIFICATION DATA:** Black ABS body with removable nylon strainer basket and polypropylene hydrodynamic weir plate, cast brass face plate, integral bronze waterstop fitting and 1/2" (F) N.P.T. connection.

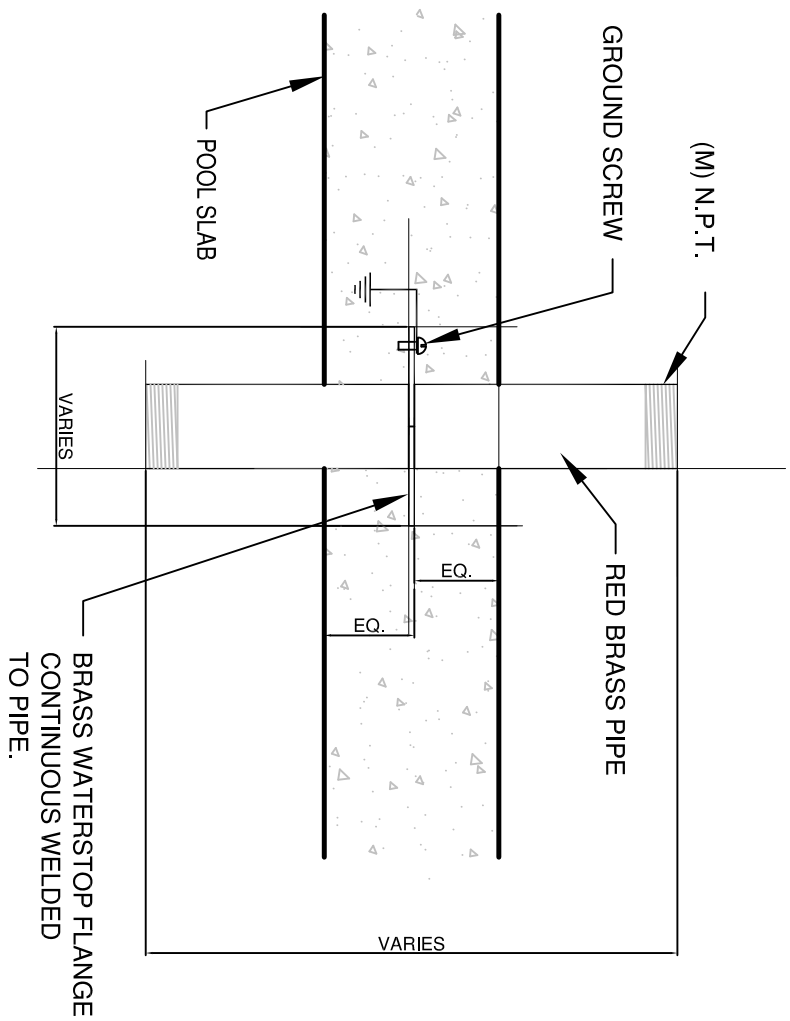
**INSTALLATION:** Install front access skimmer into the pool wall in the direction and location shown on installation drawings. Run specified type and size piping (as shown on piping schematics) from filter suction system and connect to bottom of skimmer using proper pipe fittings. Place skimmer basket into skimmer body and insure that weir plate moves freely with no resistance in either direction. Do not remove weir plate or skimmer will not function properly.

**MAINTENANCE:** Periodically check skimmer basket for debris buildup and remove and clean as necessary. Periodically check skimmer weir plate for obstructions to insure it is floating freely. Do not operate filter system without skimmer basket in place or pump damage may result. SHUT OFF FILTER PUMP BEFORE CLEANING SKIMMER. TO PREVENT INJURY.

**DESIGN/APPLICATION DATA:** RPS-150-FA-WS, front access skimmer is designed for use in fountains and reflecting pools as a secondary filter system return point and strainer device to skin debris from the pool surface before setting occurs. Its "front access" design allows for discrete installation and removal of the skimmer basket.

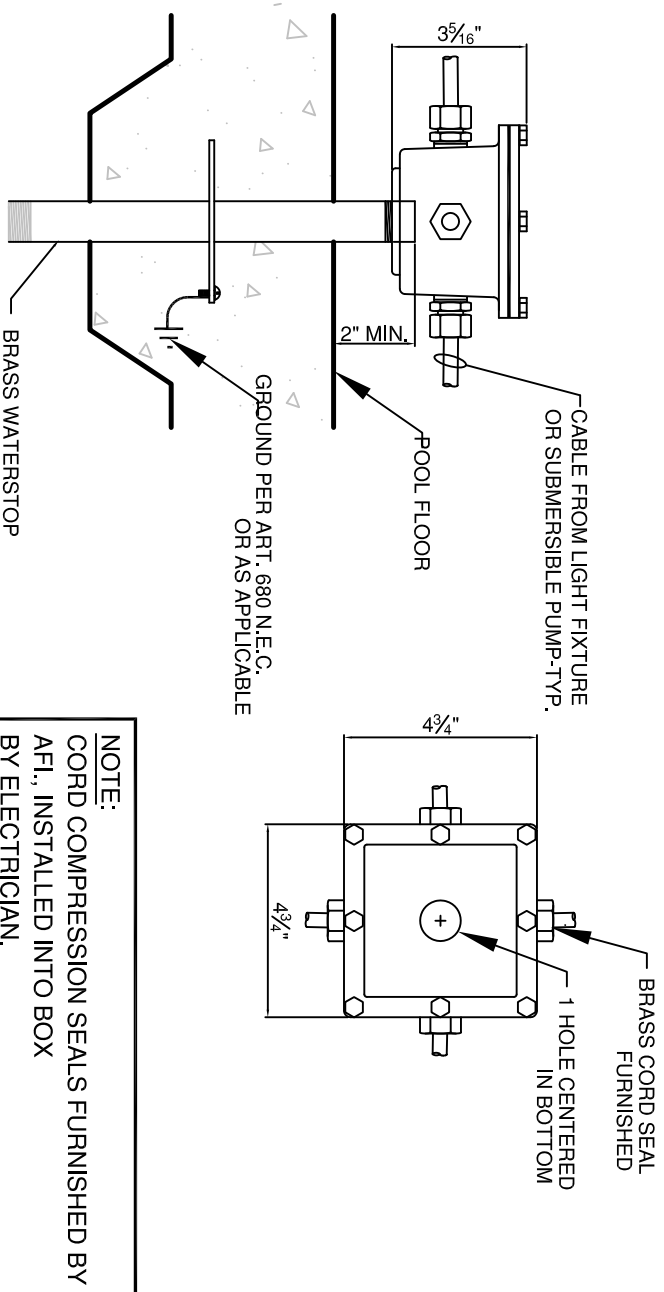
### SKIMMER DETAIL

SCALE: NONE



### WATERSTOP DETAIL

SCALE: NONE



**SPECIFICATION DATA:** Junction box shall be of all cast bronze construction with neoprene gasket and brass fasteners. Junction box shall have a minimum volume of 40.0 cubic inches and shall be furnished with integral grounding lugs and a maximum of eight (8) 1/2" brass cord compression seals.

**INSTALLATION:** AFI recommends the following procedures be followed when installing underwater junction boxes.

1. Check local electrical code before installing. Must comply with NEC article 680.
2. Use only Everdur® or brass pipe for conduit where exposed to pool water.
3. After making and verifying all connections, use putty provided to seal all conduit entries into J-box.
4. Once conduits are sealed, pot junction box with potting compound
5. Use good quality thread sealant on junction boxes.
6. Pressure check conduit system to eliminate all leaks.

NOTE: CORD COMPRESSION SEALS FURNISHED BY AFI, INSTALLED INTO BOX BY ELECTRICIAN.

NOTE: ONCE WIRING IS COMPLETED, FLASH LIGHTING CIRCUITS MOMENTARILY (10 SECONDS) TO VERIFY PROPER OPERATION. THEN WITH PUTTY PROVIDED, SEAL ALL CONDUIT ENTRIES INTO J-BOX PRIOR TO POTTING WITH POTTING COMPOUND.

### JUNCTION BOX DETAIL

SCALE: NONE